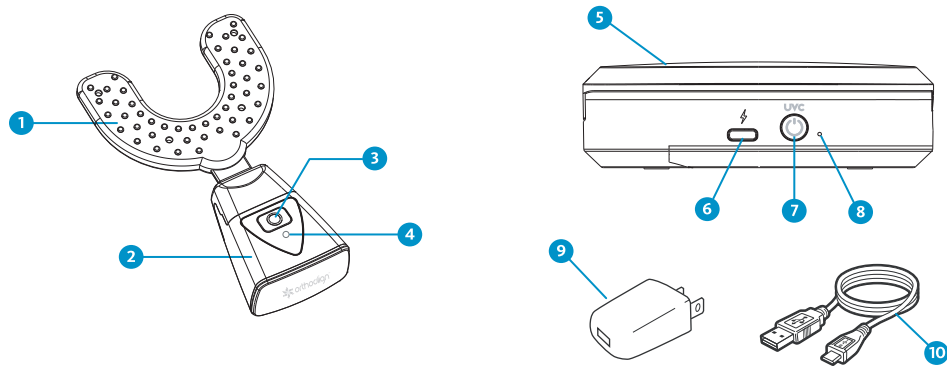
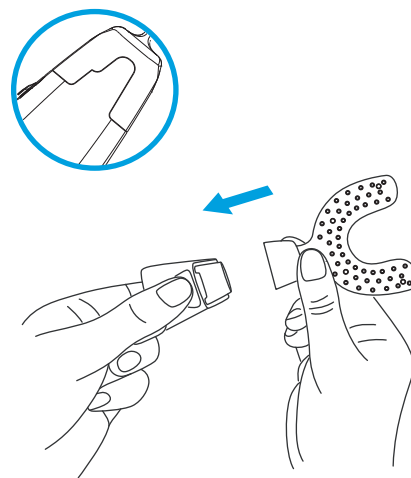


Features and Components



1 Mouthpiece	➤ Universal brackets fit most people's dental arches, safe food grade silicone.
2 Main unit	➤ Control system.
3 Power switch	➤ Start, shutdown, mode switch button.
4 Indicator light	➤ The light will indicate the current status, when starting, frequency switching, low battery, and charging.
5 Charging case	➤ Machine charging needs to be put into the charging box to charge.
6 Type-c charging port	➤ Please use type-c cable.
7 UVC button	➤ The charging case is equipped with UV disinfection, press once to start the power supply, while automatically executing 5 minutes of disinfection.
8 Charging indicator	➤ Connected to the power supply, the indicator lights up when the charging cable is connected.
9 Charger	➤ AC100-240V 50/60Hz.
10 USB Cable	➤ Cable USB 2.0 high-speed transmission cable 1m.

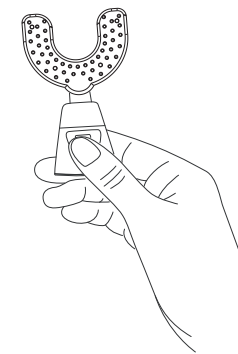
Installation Connections



Attachment of the mouthpiece to the main unit

- 1 Unpack the mouthpiece inside the box.
- 2 Insert the mouthpiece into the main unit in the direction of the arrow until you hear a click. Pay attention to the correct side position, as it cannot be installed without correct alignment.

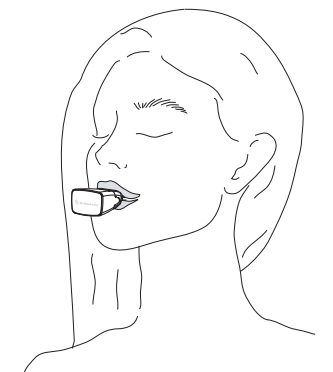
Start machine



Press the switch button to start

- Press the switch to perform 10 minutes of vibration, at which time the frequency is 30Hz. the led light flashes blue at a slow speed.
- Press the switch button again to perform 5 minutes of vibration, at this time the frequency is 120Hz. The LED light flashes blue quickly.
- Press and hold the switch button for 3 seconds to stop the devices.
- The red LED light flashes rapidly when the power is low.

Steps for Use

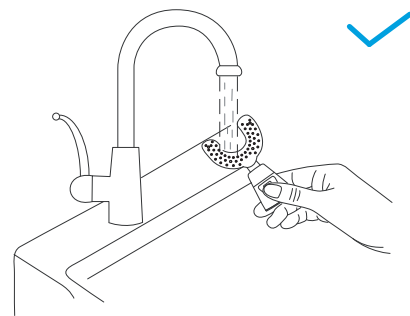


Teeth gently bite the mouthpiece, please do not bite vigorously.

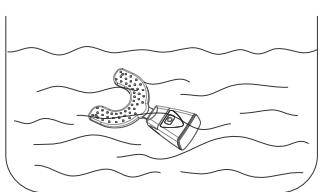
- 1 Press the switch button to start 30Hz frequency vibration, 10 minutes and stop automatically after 10 minutes. Do this twice a day.
 - 2 Press the switch button twice to start 120Hz frequency vibration and stop automatically after 5 minutes. Please perform once a day.
- Please select one of the frequencies for daily use

Cleaning

- Rinse with water after each use.
- The machine is designed to be waterproof

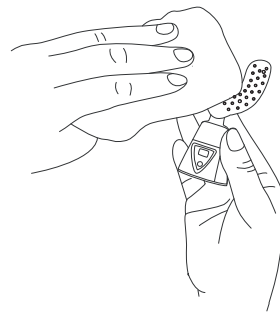


- Do not immerse in water for a long time.

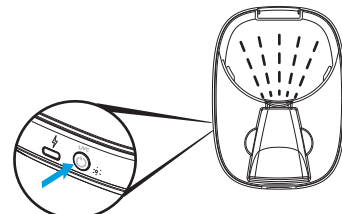


Disinfection

- Wipe the water from the main unit with a soft cloth or paper towel after cleaning.
- Put it in the charging case when not in use

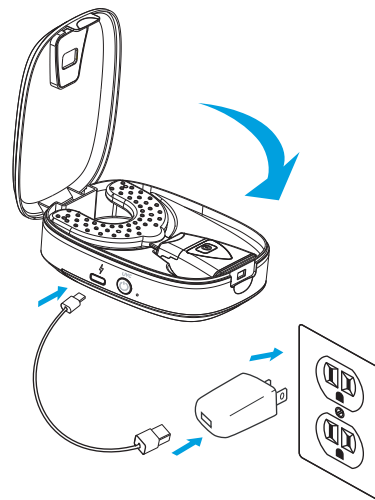


- Press UVC once to charge and perform 5 minutes of UVC disinfection at the same time.
- Press UVC button once more to turn off UVC



Charging

- 1 Connect power and USB cable cable, press UVC button charging case indicator light is lit. (Long press on UVC button will turn off the power)
- 2 Put the devices is placed flat in the charging case, the main unit shows the breathing light, and the main unit and charging case show blue light at the same time when fully charged.



Technical support

Go to www.cmedicali.com

Safety, Warnings, Precautions

The product is used in conjunction with your doctors aligner treatment plan and clear aligner therapy (Invisalign, Clear Correct, MTM, etc.)
orthoalign™
 Your orthodontist can plan and deliver real acceleration with precision at the beginning of treatment planning. If your orthodontist does all your treatment planning upfront, it will ensure that that the route from start to finish will be as direct as possible. Almost any brand of braces will allow for precision treatment planning.

Contact your orthodontist or dentist if any discomfort, or pain occurs during and after use of the product.
 Do not rinse or submerge the entire Charging Case in water. Do not attempt to service or perform maintenance on the device. Nomodification of the equipment is allowed.
 Do not unplug the device from the power outlet with wet hands. Unplug the power cord if you are not going to use the charging case for a long time.

Manufacturer:
 Century Medical, Inc.
 1712 Pioneer Ave. Ste 500
 Cheyenne, WY 82001 USA
 Tel: 1(307)222-9655
 Email: info@cmedicali.com

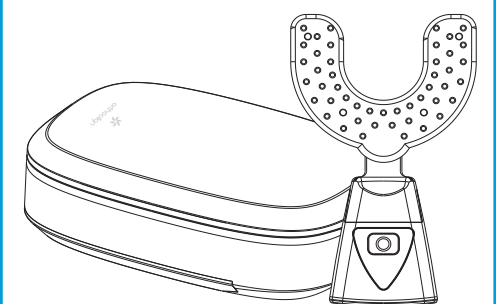
EC REP
 Obelis s.a.
 Bd General Wabis 53
 1030 Brussels, Belgium



Environment
 Do not throw away the appliance with the normal household waste at the end of its life, but hand it in at an official collection point for recycling. By doing this, you help to preserve the environment

CAUTION: Changes or modifications to this device not authorized by Century Medical, Inc.
 May void the users authority to operate this device.

© 2023 Century Medical, Inc.



Pulse Vibration Device

USER MANUAL